

CSA:TB



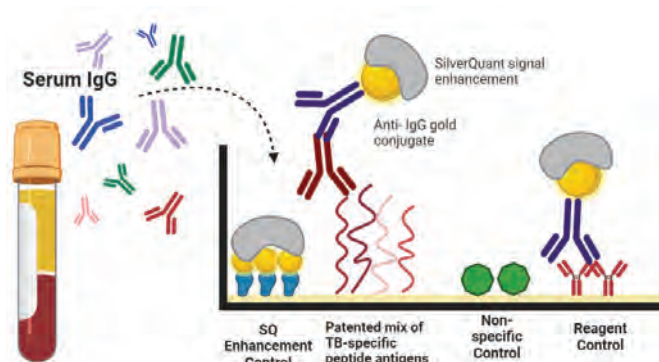
Antibody-based screening of NHPs for *M. tuberculosis*

Nonhuman primates (NHPs) in captivity are routinely screened for *M. tuberculosis* infection (TB) during transport quarantine and for routine colony health monitoring. The tuberculin skin test (TST) is the minimal required screening method, but often misses latent TB infections.

Supplemental testing methods like the CSA: TB assay should be incorporated into your TB screening protocol to reduce the risk of undetected TB infections in nonhuman primates.

CSA: TB Workflow. Diluted samples are incubated with patented TB antigens spotted on assay plates with one sample per well. Unbound serum IgG are washed off, and bound IgG is detected with anti-IgG gold conjugate. Immune complexes are visualized with the SilverQuant reagents. Results are quantified with the AQ 1000 or IAN Scanner within minutes.

How It Works



One Sample, Multiple Results

CSA: Simian TB Array Layout and Antigen Configuration

Pos.	A2	A3	A4	A5	A6	A7	A8	A9	A10	A11	A12
Reg.	B2	B3	B4	B5	B6	B7	B8	B9	B10	B11	B12
C1	C2	C3	C4	C5	C6	C7	C8	C9	C10	C11	C12
D1	D2	D3	D4	D5	D6	D7	D8	D9	D10	D11	D12
E1	E2	E3	E4	E5	E6	E7	E8	E9	E10	E11	E12
F1	F2	F3	F4	F5	F6	F7	F8	F9	F10	F11	F12
G1	G2	G3	G4	G5	G6	G7	G8	G9	G10	G11	G12
H2	H3	H4	H5	H6	H7	H8	H9	H10	H11	H12	



Each well contains 4 spots for each control or TB antigen. The top image shows TB positive results, and the bottom shows a TB negative result.

Features and Benefits

Rapid: Results in about 2 hours

Affordable: Multiplex assay for screening multiple samples reduces labor costs

Small sample volumes: Internal controls and assay controls ensure accurate data

Reliable: Highly sensitive and specific assay validated by National Primate Research Centers

Easy: Assay technique is as easy as an ELISA

Compatible: All CSA kits are compatible with the AQ 1000 or IAN scanner systems

US Patent No. 9,404,923 "Mycobacterium tuberculosis specific peptides for detection of infection or immunization in non-human primates"

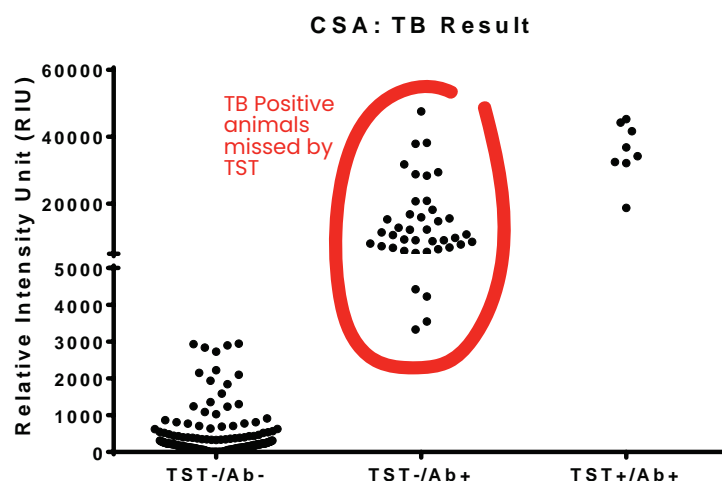


Intuitive Bio
Right answers. Right now.



Case Study

Results from high-risk colonies with TST screened animals. The CSA: TB assay identified TST positive animals with confirmed TB disease. Several TST negative animals found antibody positive here were later confirmed TB positive or were suspect due to proximity to confirmed TB cases. The CSA: TB test should be considered a supplementary testing method. For imported animals repeat TST testing in conjunction with the CSA: TB assay better identifies suspect animals prior to shipment and during quarantine.



CSA: TB Kits and Service

Run CSA kits in your lab, or let us do the work for you with our serology service.

Test #	Name	Description
12-1235	CSA: TB Kit	Tests serum for antibodies to <i>M. tuberculosis</i> .
12-1068	CSA: TB Serology Service	Tests serum for antibodies to <i>M. tuberculosis</i> .

To order:

Please email orders@intuitivebio.com for pricing and availability, or call +1 (608) 561-8730. For questions about the CSA: Simian kits or serology testing services, please email info@intuitivebio.com or call +1 (608) 561-8730.