

CSA: Simian TB

Serological screening for improved colony health management.

Nonhuman primates (NHPs) in captivity are regularly screened for *M. tuberculosis* infection, both as part of transport associated quarantine and for routine colony health maintenance programs. Despite measures employed to prevent exposure, infections continue to occur even in closed colonies. The tuberculin skin test (TST) is the required screening method to identify animals with acute or latent *M. tuberculosis* infection. However, the TST only screening method has been insufficient to identify infected animals as there has been an increase in suspicious TST at import and of TST negative animals later identified with *M. tuberculosis* infection. Because of the low sensitivity of the TST, additional testing methods like the CSA:TB Assay should be incorporated into the screening routine to reduce the risk of TB in colonies.

Key Benefits

Rapid: Screen samples for antibodies to *M. tuberculosis* in about 2.5 hours

Affordable: Significant cost savings over outsourced testings

Small sample volumes: Uses 5 µl of serum per assay

Reliable: Highly sensitive and specific assay validated by several National Primate Research Centers

Easy: Assay technique as easy as an ELISA

Affordable Analyzer: All AIM assays are compatible with the AQ series analyzers, a low-cost and rapid scanning system.

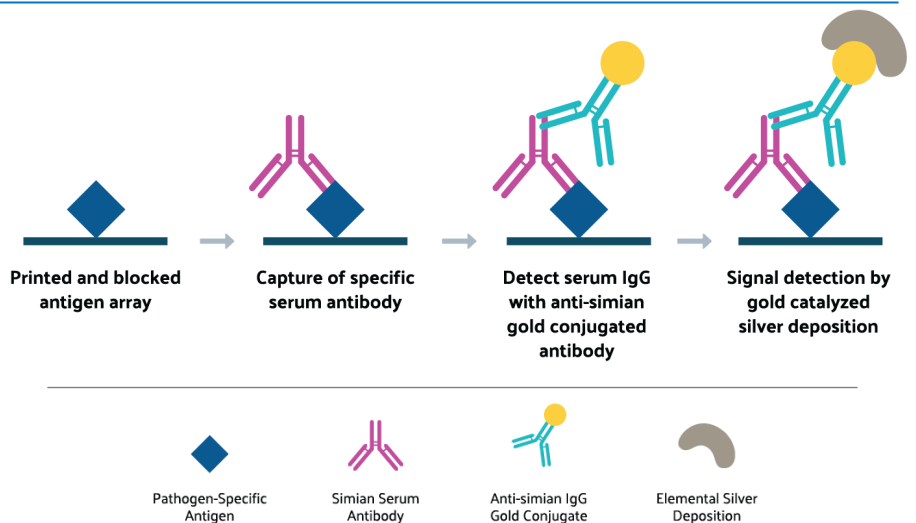
US Patent No. 9,404,923 "Mycobacterium tuberculosis specific peptides for detection of infection or immunization in non-human primates"

How It Works

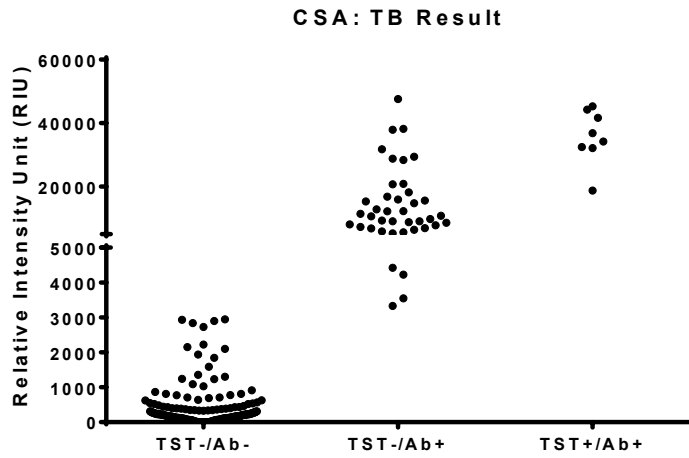
One sample, multiple results.

Basic Assay Workflow for CSA Assays.

Diluted samples are incubated with assay plates with one sample per well. Unbound serum IgG are washed off, and bound IgG detected with anti-IgG gold conjugate. Immune complexes are visualized with the SilverQuant reagents.



CSA: Simian TB kits provide sensitive and reliable screening tools for your colony. The CSA method identifies animals that have been previously exposed to an infectious agent by detecting specific serum antibodies to pathogens like *M. tuberculosis*. Results are quantified with the AQ 1000 instrument within minutes.



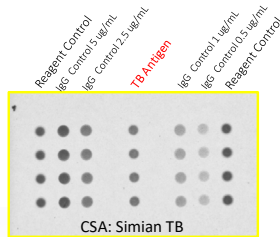
Results from closed colonies with TST positive animals. The CSA: TB assay identified TST positive animals with confirmed TB disease. Several TST negative animals found antibody positive here were later confirmed positive or were suspect due to proximity to confirmed TB cases.

The CSA: Simian TB test should be considered a supplementary testing method. For imported animals repeat TST testing in conjunction with the CSA: Simian TB assay better identifies suspect animals prior to shipment and during quarantine.

CSA: Simian Kits

Each CSA: Simian kit comes with a 96-well assay plates, containing the multiplex antigen assay for TB. Also included are all buffers and reagents required to run up to 94 samples per kit, including Positive and Negative control serum.

Completed assays are scanned and analyzed on the AQ 1000 reader. A complete report is generated, providing a customized spreadsheet compatible with most Laboratory Information Systems (LIMs).



Part No.	Product Name	Description
12-1212	CSA: Simian Panel A Kit	Tests up to 92 samples per kit for SRV, STLV, SIV, herpes B virus, and measles.
12-1213	CSA: Simian Panel E Kit	Tests up to 92 samples per kit for SRV, STLV, SIV, herpes B virus, measles, CMV, LCV, RRV, and SFV.
12-1215	CSA: Simian TB Kit	Tests up to 92 samples per kit for M. tuberculosis.
Custom	Custom CSA Kit	Tests up to 92 samples per kit for a custom antigen panel.

All CSA: Simian kits are compatible with the AQ 1000 reader. Analysis template and customized reports are provided with any instrument purchase. For more information about the AQ 1000 scanner, please visit <http://intuitivebio.com/item/aq-1000/>

CSA: Simian TB Serology Services

Intuitive Biosciences can perform the CSA: Simian TB testing for your samples. Serum samples shipped frozen or cold overnight can be tested immediately with results within 3 business days. Sample Requisition Forms need to be completed prior to shipping. For international customers, please call ahead to arrange import/export permits or to apply for a CITES permit. Please call or email for pricing for sample testing service. Volume discounts are available. Requisition forms and shipping instructions can be downloaded from our website at

<https://goo.gl/Ny23aq>.

To order:

Please email orders@intuitivebio.com for pricing and availability, or call +1 (608) 561-8730.

For questions about the CSA: Simian kits or serology testing services, please email info@intuitivebio.com or call +1 (608) 561-8730 and ask to speak with Dr. Kimberly Luke.